

CASE STUDY – HEALTHCARE

Combined; The Royal London & St Barts Hospitals

Skanska Construction

Shire were appointed as a subcontractor to install the IPS Panelling and the loose items of sanitaryware, at both the Royal London Hospital and the St Barts Hospital. Both projects were managed by Skanska Construction and were installed concurrently, with Shire providing an on-site management team for both projects.

This involved working closely with Venesta Washrooms Ltd on the liaising with site dimensions, sequence of deliveries and off-site storage of the removable panels, including the co-ordination of such deliveries to match the programme laid down by Skanska Construction.



The two projects combined totalled £ 2.2million worth of turnover for Shire (labour only), with the material purchase added to this value, would result in a total supply and fit figure of £ 6.5million. The programme of works has seen Shire on site with a permanent management team for over three years.

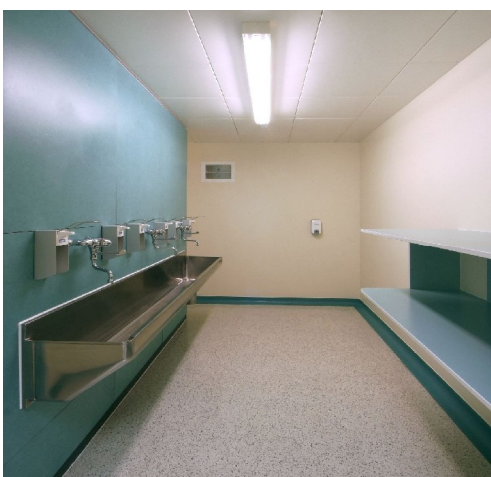
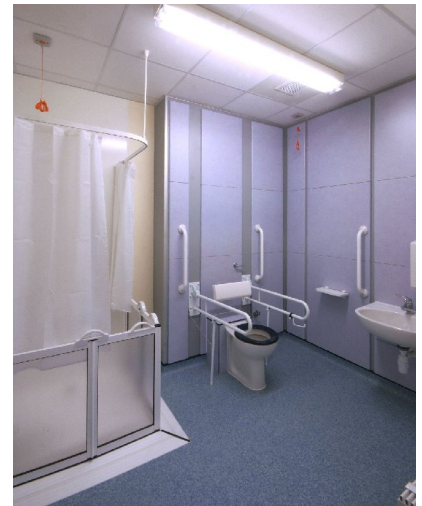
The work content involved Shire not only installing the IPS panels, but also undertaking the final connections of hot / cold and waste pipework, including the phenolic lagging of the pipework.

All works were then flush tested and commissioned prior to the final fix panels being fixed into place.

At the Royal London Hospital, the project was split down into three main towers. Shire had a management structure on site that involved an overall project manager, then a sub-manager that was responsible for each tower. Within this team, a Supervisor then had the overall responsibility for the labour out on site. This enabled the project to be attacked with a co-ordinated approach, with a clear chain of responsibility from the Skanska floor manager, right down to the Shire team supervisor.

Both projects were significant in size, with an anticipated final project value of over £ 1 billion. The Royal London, Britain's current largest hospital, is spread over 17 floors, with each floor having the m² of two football pitches! Some of the combined items of sanitaryware for the two projects equate to;

- a) 1300 single WC units
- b) 3436 single WHB units (en-suite and clinical)
- c) 144 Slop Hoppers
- d) 125 Scrub Trough's
- e) 95 DSU Sinks



All works were fully tested and commissioned, including the preparation of full sign off documentation and snag rectification.

CONTACT: - **MARCUS LYNES** – info@shire-is.com - 0117 957 2255

